

SPLASH

Oasis approach for modeling of intense rain

September 4, 2019

Daniel Knös

Stockholm

Agenda

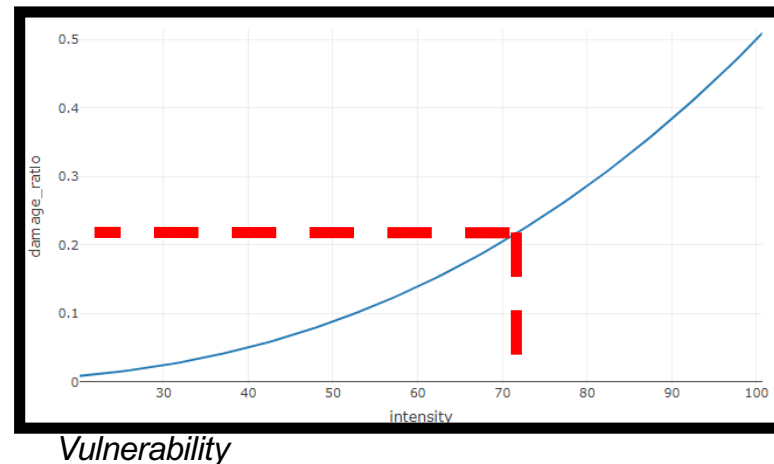
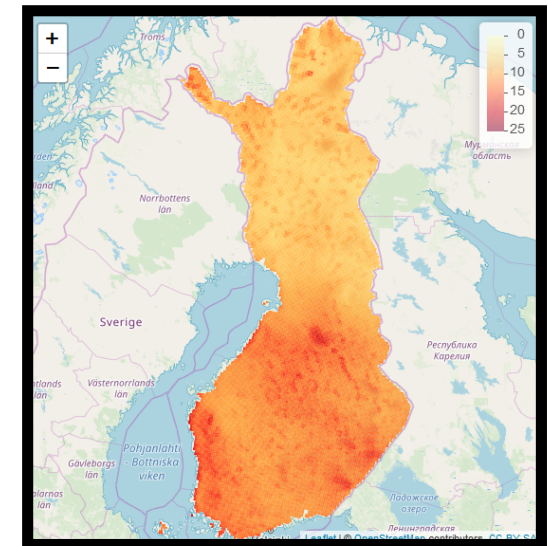
Secondary Information

- Introduction to Cat Modeling & Oasis
- Application in Splash project
- Challenges and uncertainties

Why cat modeling?

- Gives information beyond the experience
- Helps insurance companies in their risk management
 - Reinsurance
 - Portfolio steering
 - Event response
- Components in a cat model
 - Hazard
 - Vulnerability
 - (*Financial*)

Hazard




Why Oasis?

- Stick to one data format
- Open source
 - Free
 - Publicly available
 - Standard format
- Fast



Oasis members

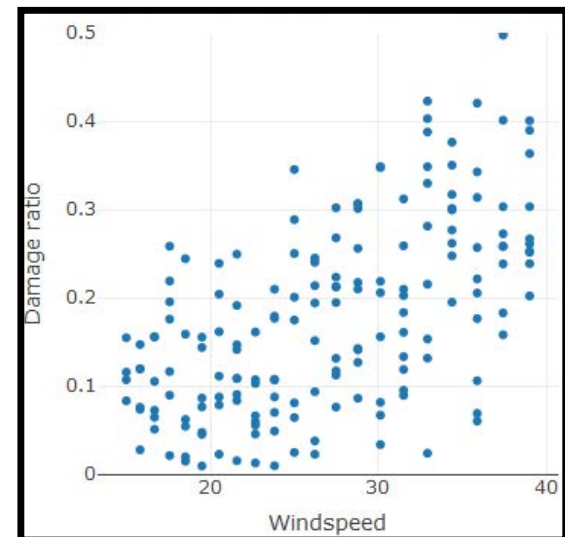
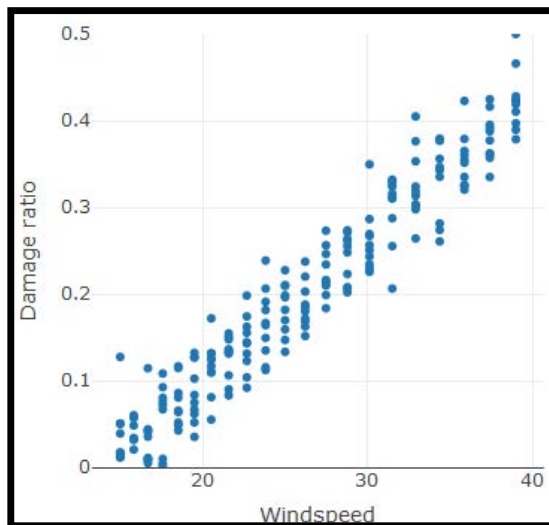
Application in Splash

- Modelling losses from intense rainfall over Jönköping
 - The splash model is a small cat model
 - A few events
 - 50x50m (140.000 cells)
 - 57.000 buildings
 - 1 vulnerability curve
- 



Challenges / Uncertainties

- Hazard
 - The most scientific part, thus fairly open and documented
- Vulnerability
 - Data, data, data



Questions?

