

multiple land-use

- cooperation and conflict

BJØRN EGIL FLØ





UTMARK

(outfield)

utmark

- strong historic connection to the agrarian local community



extension of the farm

extension of innmarka (infield)

the communities common free resources

cooperation on designing sophisticated rules

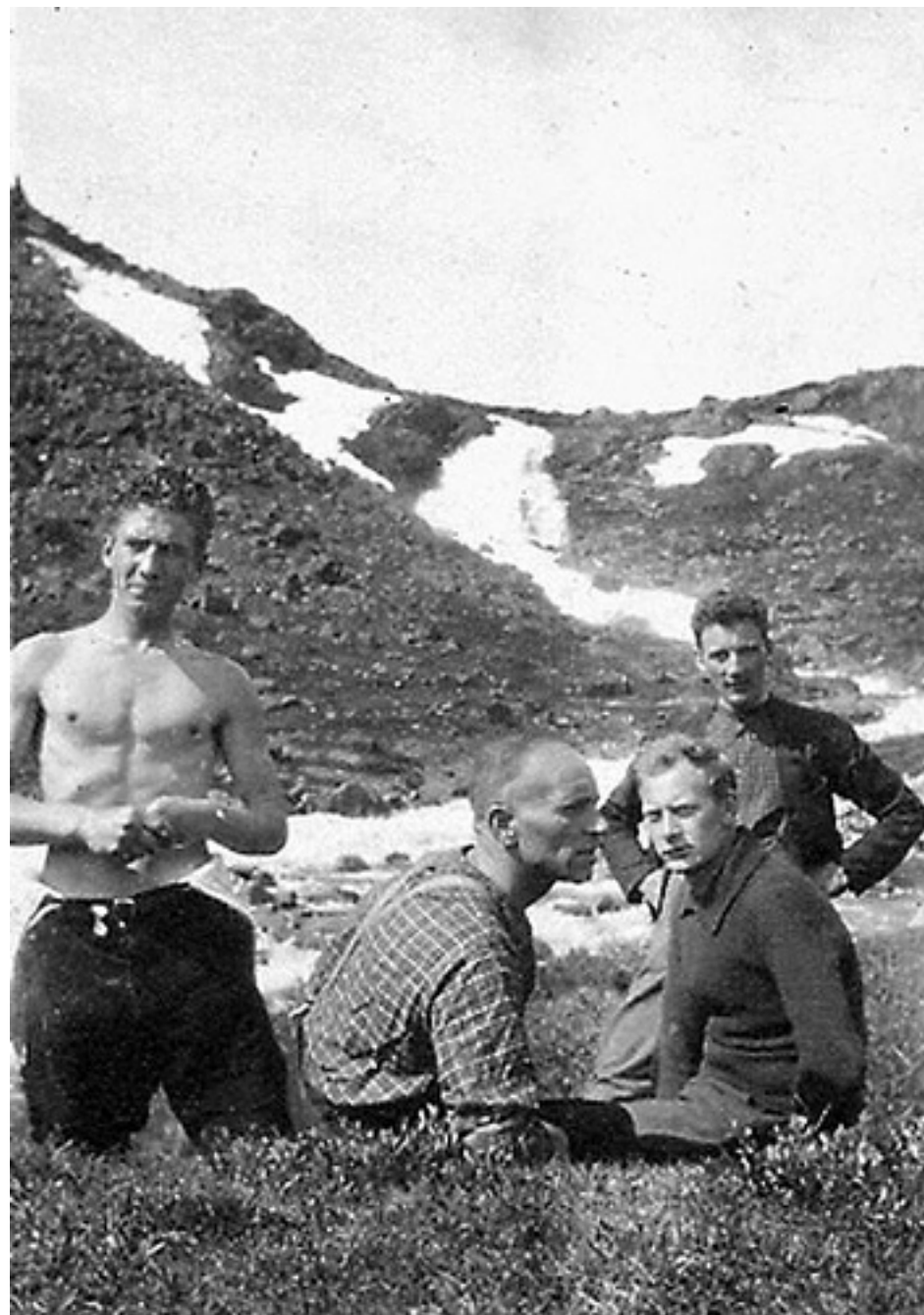
a fare from harmonic cooperation





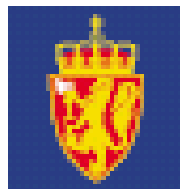
NIBIO
NORSK INSTITUTT FOR
BIOØKONOMI











DET KONGELIGE
LANDBRUKSDEPARTEMENT

St.meld. nr. 1

(1999-2000)

Om norsk landbruk og næringsmiddelindustri

*Tilråding fra Landbruksdepartementet
godkjent i statsråd*



a transformation of the utmark

- from grazing area to attractive attraction for the travel operators
- «to bring the value creation back to the local farmers»
- some places and other places.....

the new economy

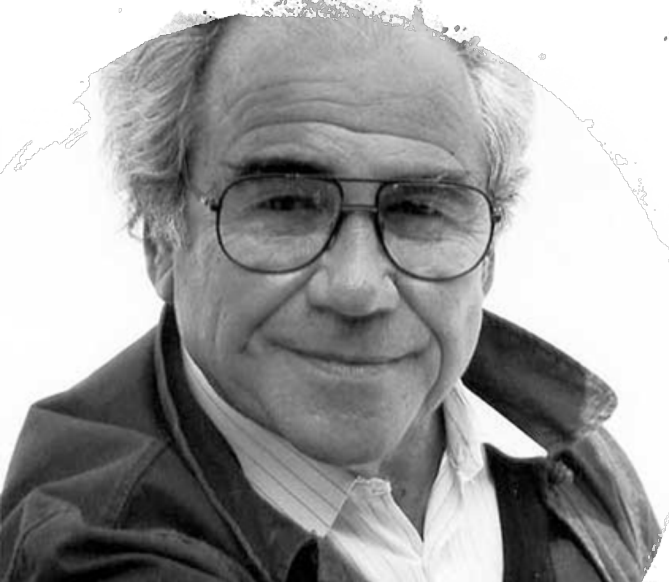
- from production to consumption





Steven Best and the new economy

- *the society of the commodity*
- *the society of the spectacle*
- *the society of the simulacrum*



the society of the commodity

- came with the money economy (capitalism)
- from being the farmers food to become the commodity which gave the farmer food.
- a transformation from food to commodity
- exported out of the community



the society of the spectacle

- a new transformation of the sheep
- the goods is the experience of seeing the sheep-farmers running their boots off gathering the sheep
- the farmer is the actor and the sheep the scenery in what we experience as an authentic theater about rural culture



the society of the simulacrum

- we participate ourselves in the gathering of the sheep and simulate being farmers
- take selfies and post it on Facebook

«what taste better than lamb rack after a long day in the mountains?»



the new utmark

- a shift in the meaning or maybe also the purpose of Utmarka
- an arena for self-representation for a symbol consuming middleclass
- a symbol for our conspicuous consumption
- a requisite for our energetic projection of identities
- new users into Utmarka who seeks legitimacy for their own interests





then came the bio-economy

food crises

climate crises

oil-price-crises

- a shift towards neo-productivism
- new buzz words
 - sustainable intensification
 - the green shift
 - bio-economy

→ will have effect on the rural and utmarka

→ growing conflict between different users



to live together as humans

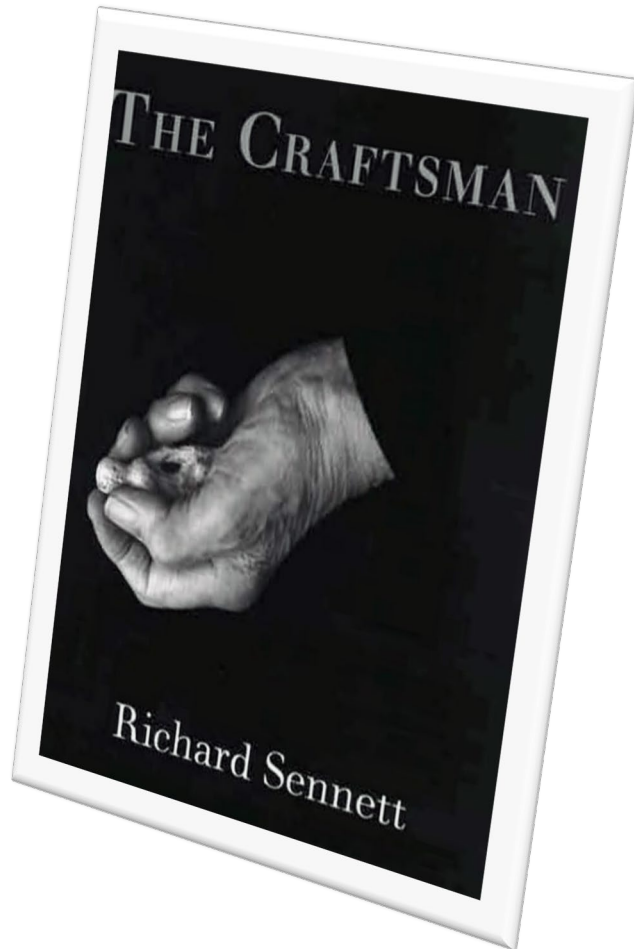


- we are different
 - interests and motive
 - traditions and religion
 - capital
 - social field

«we tend to avoid engaging socially with people unlike ourselves»

(Richard Sennett 2012)

«cooperation is a craft,... »



«... and the foundation for skillful cooperation lie in learning to listen well»

(Richard Sennett 2009)

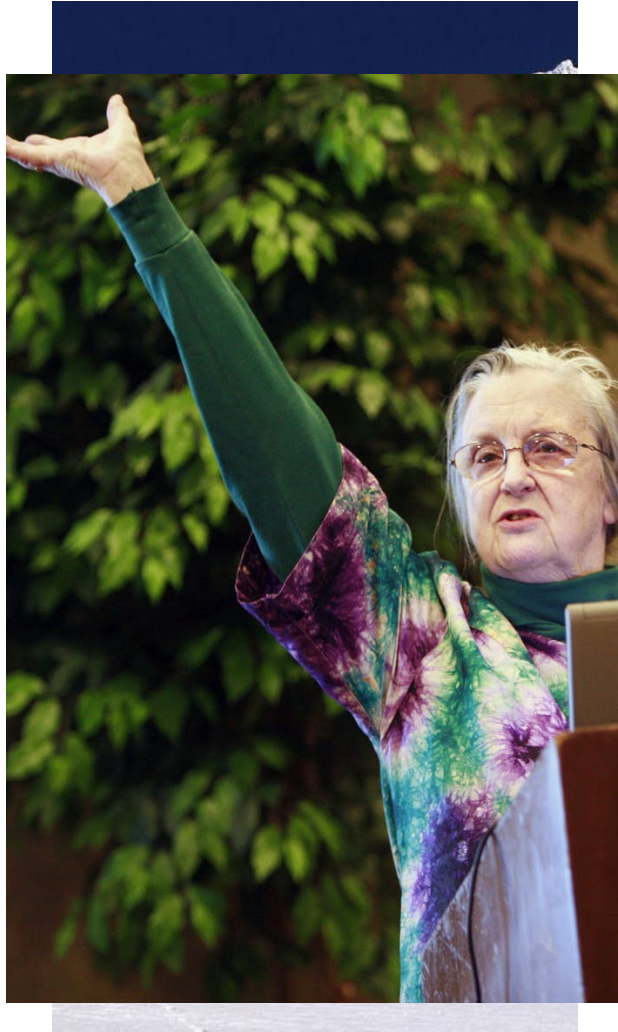
debate

- is only about positioning

discuss

- reaching mutual goals through dialog between equally respected partners

the imaginary tragedy

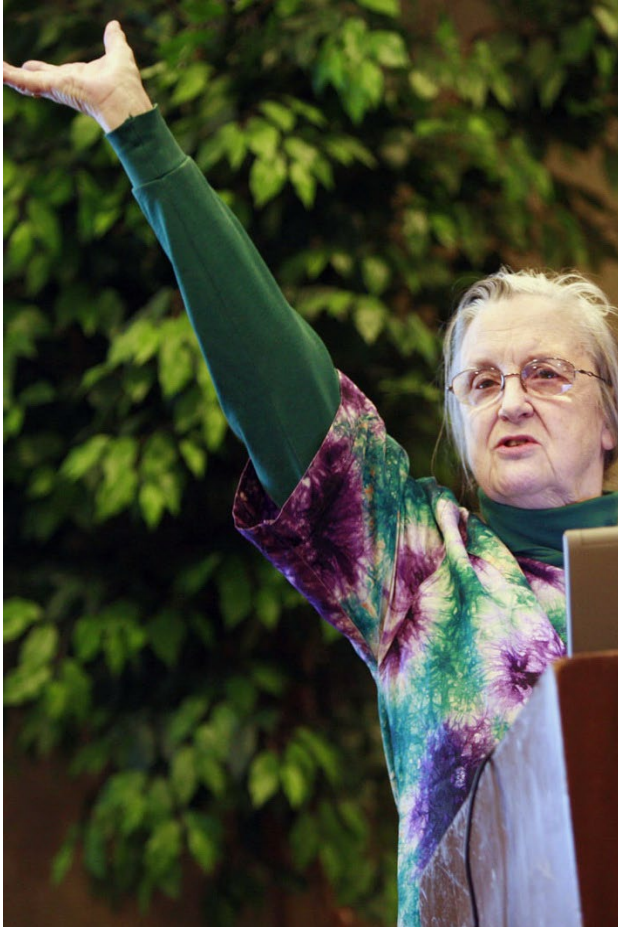


- the tragedy of the commons
 - parallel strengthening of the believes on private property and strong national control
 - private – business development
 - state – conservation/protected areas

«needier privatization nor nationalization seems to work well» (Ostrom 1990, 2005)

self-organized governance
institutions

self-organized governance institutions



- the best regimes:
 - lived together for a long time
 - are best adapted to the resources they are set to manage
 - the most sophisticated and well adjusted monitoring-, decisions- and sanctioning mechanism
 - highest level of trust and the legitimacy
- local governance system based on voluntary cooperation built upon joint rules and practice – under certain conditions – are much more efficient than both private and national control

the conditions



- can't work alone
 - part of the larger society
 - secure their internal legitimacy and authority
 - need real right to make
 - their own rules
 - monitor
 - sanction
 - resource boundaries in accordance to the governing institution
 - accept and respect all partners legal rights

governance is a craft



... and craftsmanship are best learned from working together with the craftsman.

~~“the best governance model is the untried”~~

- what role should the
 - landowner
 - the local community
 - the municipality
 - the regional or county level
 - and the statehave in defining the rules, monitoring and sanctioning?
- how should they work together?



thank you

Flø 2006. Utanfor folkeskikken - ei forteljing om nye bygdefolk. *Syn og Segn* (2): 6-15.

Flø 2008. Bygdedyret og elgen - ei stiavhengig analyse av næringsutvikling i elgskogen. I *Den nye bygda*. Redigert av: R. Almås, M. S. Haugen, M. Villa & J. F. Rye. Tapir. Trondheim.

Flø 2009. Vondtet i norsk bygdeutvikling. *Syn og Segn* (3): 76-80.

Flø 2010. Bygda - forståing og implikasjonar. *PLAN* (5): 20-25.

Flø 2011. Sex, sprit og storokse - Marknaden i møte med den østerdalske elgjaktetos. I *Rurale brytningar*. Redigert av: M. Haugen & E. P. Stræte. Tapir. Trondheim.

Flø 2012. Arealpress i utmark. *PLAN* (3 - 4/2012): 76 - 79.

Flø 2012. Kjøtt, kjensle og kameratskap - om reglar, normer og kulturell danning. I *Bygdeutviklingas paradoks*. Redigert av: M. B. Bringslid. Scandinavian Academic Press. Oslo.

Flø 2013. Me og dei andre. Om lindukar, Framstegspartiet og bygda som sosial konstruksjon. *Sosiologisk Tidsskrift* 21 (nr 2): 152-168.

Flø 2015. Bygda som vare – om bygda, elgen og folkeskikken. Doktoravhandling ved NTNU 2015:128. Trondheim

Flø 2017. Det grønne skiftet og grendene – sentrum og periferien i den nye økonomien. *PLAN* (1): 26-29

Flø 2018. Av svik kom mistru sigande. *Samtiden* (nr 1): 54-61